

Jacaranda Grove



Our focus is you

With over 35 years of dedicated service to the Cessnock community, NCCCA has built a strong reputation for providing dynamic care options and fostering a sense of belonging. Jacaranda Grove proudly continues this legacy, offering a range of services to meet the diverse needs and preferences of its residents.

At Jacaranda Grove, we understand the importance of having a comfortable and supportive environment as you age. Our thoughtfully designed and newly renovated residential care facilities offer a range of accommodation options, ensuring that you find the perfect place to call home. Our compassionate staff members are available around the clock to provide personalised care, ensuring your safety and well-being at all times.



What's included?

- Quality 24/7 Registered Nurse Care
- Nurse Practitioner Clinics
- Physiotherapy
- Dietitian
- Lifestyle and Wellbeing Programs
- Palliative care
- On site Chef
- Chaplaincy and Pastoral Care
- Volunteers and Community Visitors
- Bus Outings
- Library and talking books

Optional Services offered by external providers

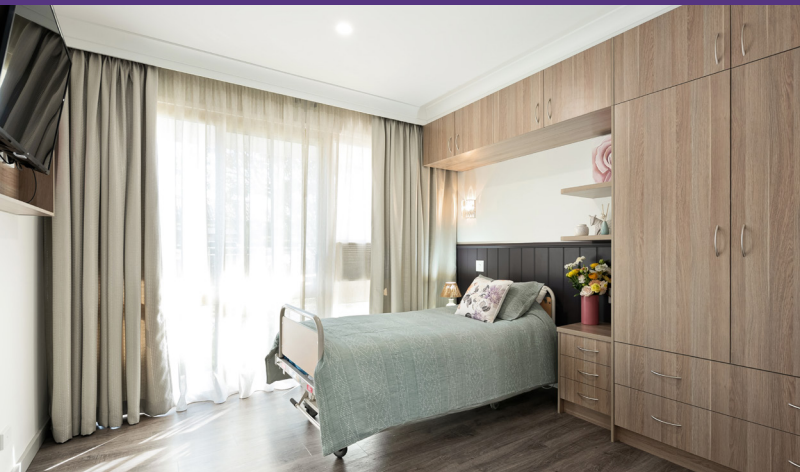
* extra costs may be charged by service provider

- Hairdressing salon
- Hearing services
- Dental services
- Podiatry
- Optical services
- Beautician



Our focus is you

Jacaranda Grove
2 Mount View Road, CESSNOCK NSW 2325



Our Rooms

Jacaranda Grove consists of 42 single rooms, each with an ensuite. Our rooms are designed to maximise natural light and comfort and are spread across four areas, Azalea, Rose, Camelia, and Magnolia.

A standard room includes air-conditioning, electric adjustable bed, built in wardrobe, bedside table, chair and vital call system if required.

Location

In the heart of Cessnock making access to local shops and other specialties easy.

GET IN TOUCH for more information

P 02 4993 3100

E mail@nccca.com.au

www.nccca.com.au

 /NCCCALimited

PRICING

Jacaranda Grove Pricing effective as at 1 April 2025.

Single Room with ensuite (14.66m² to 21.73m²)
RAD \$450,000 DAP \$100.73

PRICING OPTIONS

Refundable Accommodation Deposit (RAD)
A lump sum payment made to the aged care home that is fully refunded to you or your estate when you leave the home.

OR

Daily Accommodation Payment (DAP)
This payment is not refundable. Some people may prefer to pay for their accommodation based on a daily rate.

OR

A combination of RAD and DAP
If you decide to make a combined RAD and DAP payment, the DAP amount will be adjusted based on the lump sum amount paid.

Below is an example of a combined RAD and DAP payment based on a RAD of \$450,000. In this example the resident has \$225,000 available for part payment of the RAD. This means the DAP is worked out on the remaining \$225,000 using an MPIR of 8.17%.

$$\text{DAP} = 225,000 \times 8.17\% \div 365$$

$$\text{DAP} = \$50.36$$

So instead of paying the full RAD of \$450,000 the resident would pay a part RAD of \$225,000 as well as a DAP of \$50.36

